

How Do I Use Zmanda with Wasabi?

Zmanda is now certified for use with Wasabi. To use this product with Wasabi, please follow the instructions below.

Pre-requisites:

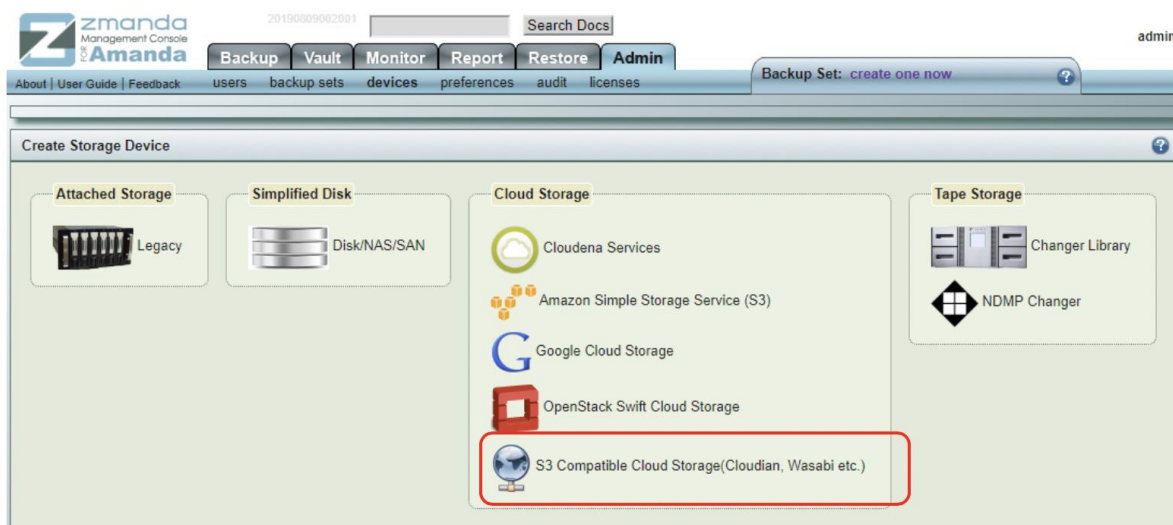
- Amanda Enterprise and Zmanda clients are installed
- Wasabi account

Steps:

1. Launch Zmanda management console

- Go to “Admin -> devices” page.

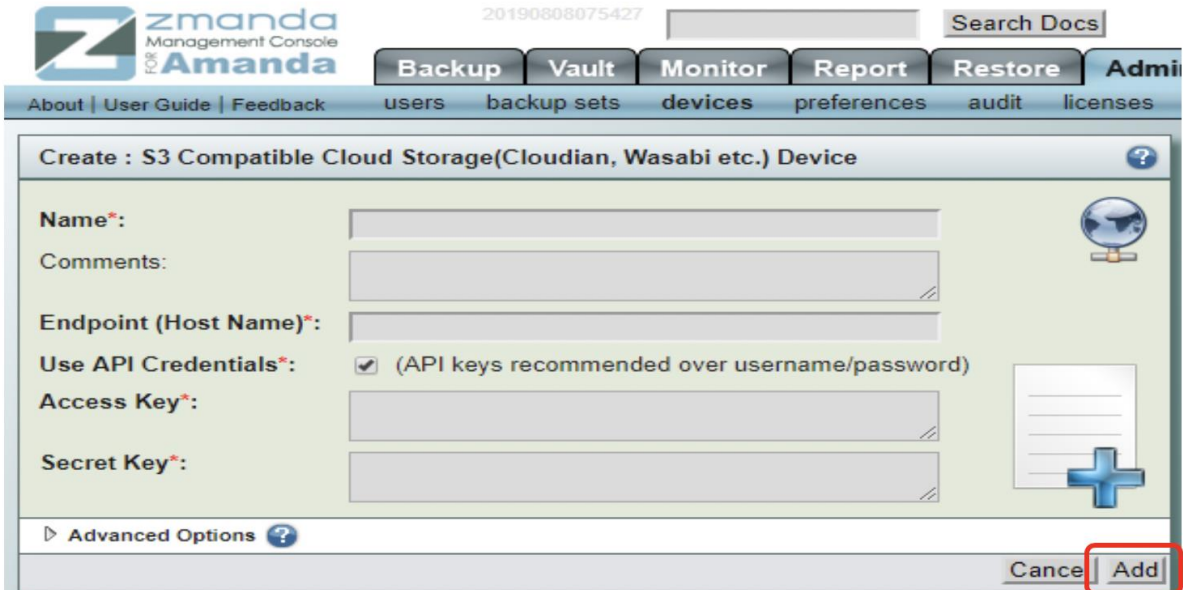
Click on “S3 Compatible Cloud Storage (Cloudian, Wasabi, etc.)”.



2. In the Cloud Storage page:

- Insert device name in “Name” field.
- Provide “Endpoint (Host Name)” - s3.wasabisys.com
- “Access Key” and
- “Secret Key” in respective fields.
- After providing all the details, click “Add”.

Note that this config example discusses the use of Wasabi's us-east-1 storage region. To use other Wasabi storage regions, please use the appropriate Wasabi service URL as described in this [article](#)



Create : S3 Compatible Cloud Storage(Cloudian, Wasabi etc.) Device

Name*:

Comments:

Endpoint (Host Name)*:

Use API Credentials*: ☒ (API keys recommended over username/password)

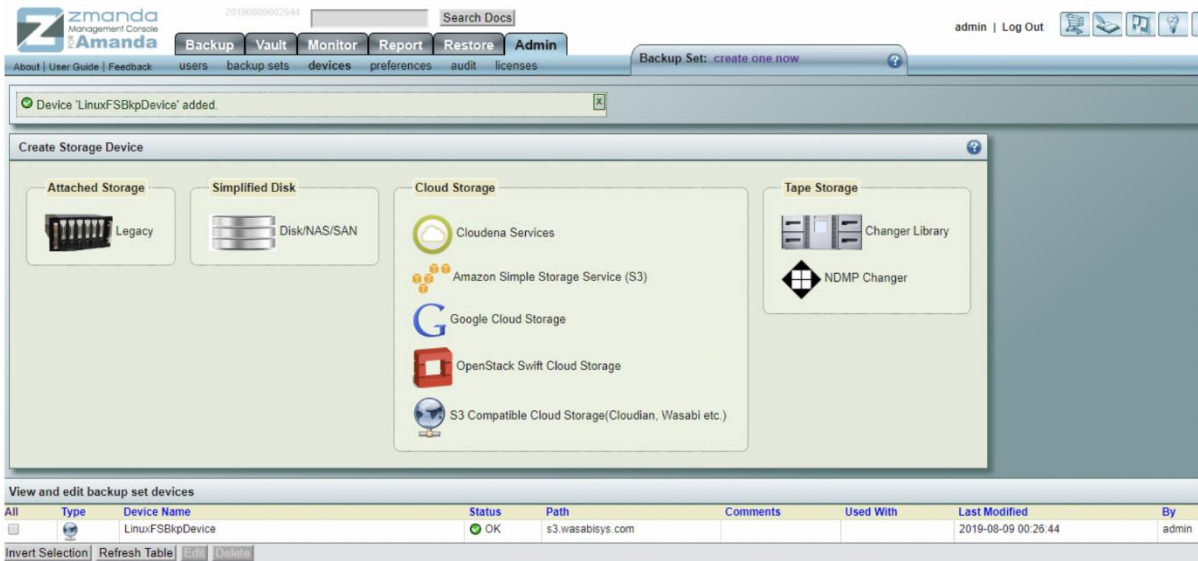
Access Key*:

Secret Key*:

Advanced Options ?

Cancel Add

3. Once the device added, the user will see a screen like shown below.



Device "LinuxFSBkpDevice" added

Create Storage Device

Attached Storage: Legacy

Simplified Disk: Disk/NAS/SAN

Cloud Storage:

- Cloudena Services
- Amazon Simple Storage Service (S3)
- Google Cloud Storage
- OpenStack Swift Cloud Storage
- S3 Compatible Cloud Storage(Cloudian, Wasabi etc.)

Tape Storage:

- Changer Library
- NDMP Changer

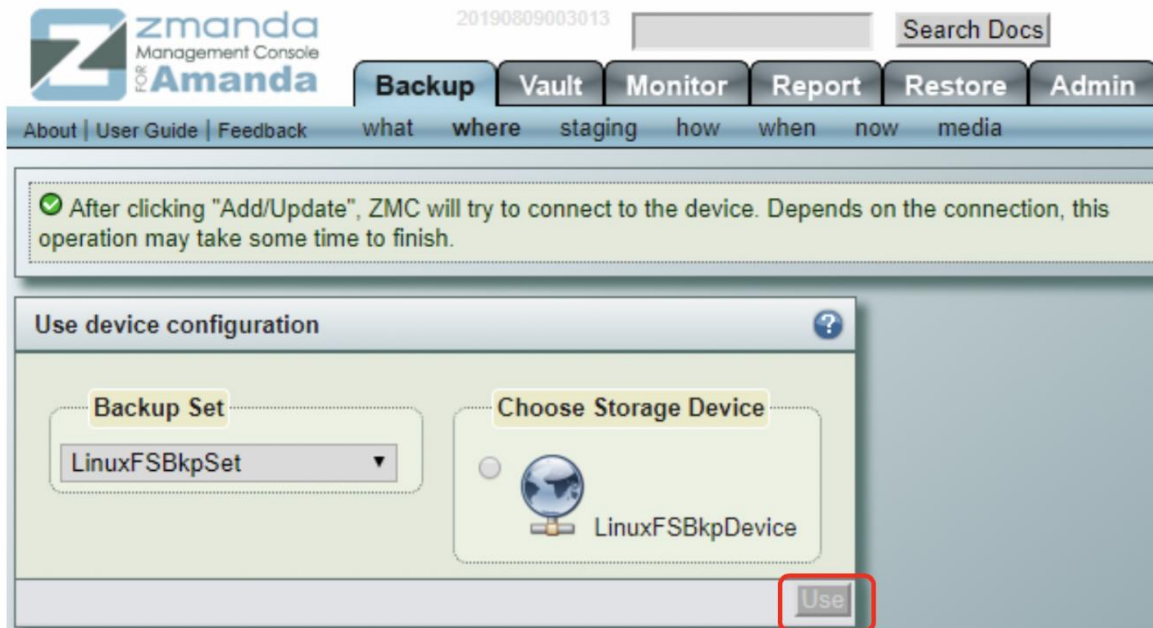
View and edit backup set devices

All	Type	Device Name	Status	Path	Comments	Used With	Last Modified	By
<input type="checkbox"/>		LinuxFSBkpDevice	OK	s3.wasabisys.com			2019-08-09 00:26:44	admin

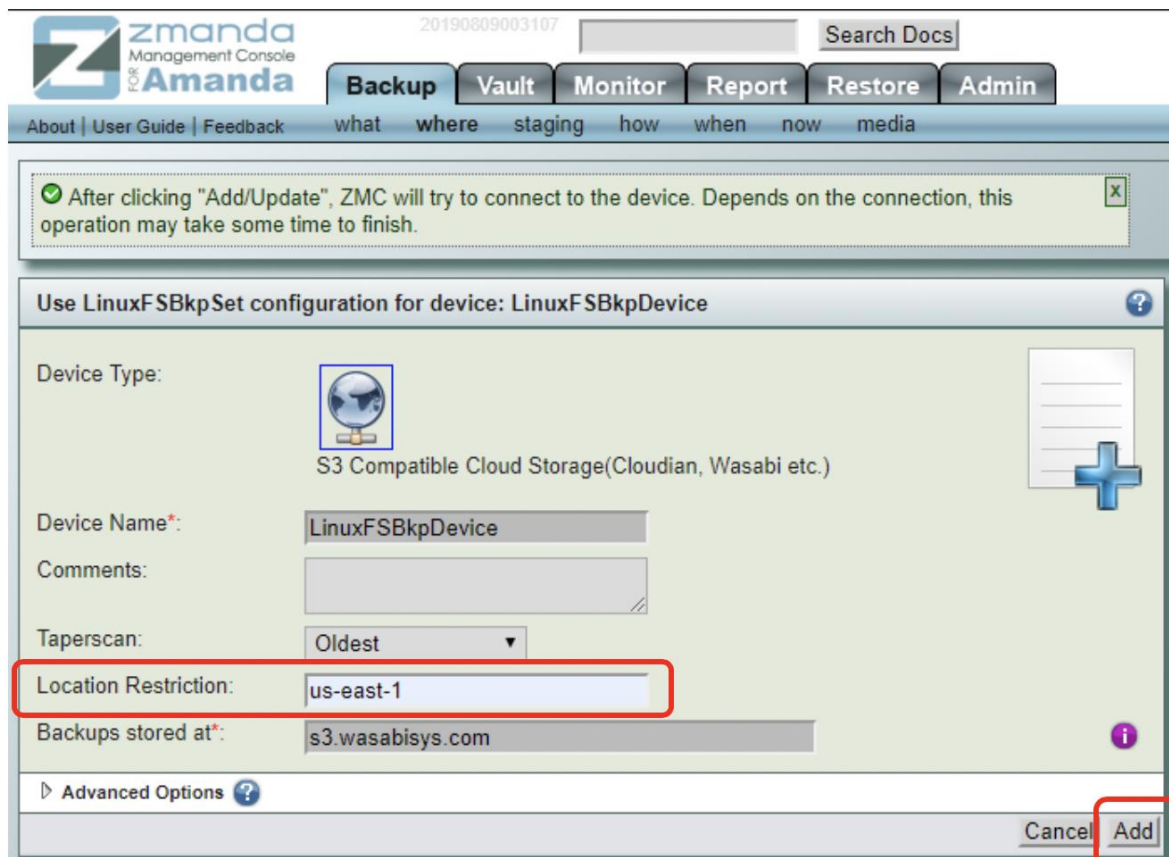
Invert Selection Refresh Table Add Remove

4. Create a backup set:

- From "Backup -> where" page, assign "Wasabi device" created to the backup set.
- Click on "Radio button" as shown in the image below.
- Click "Use".



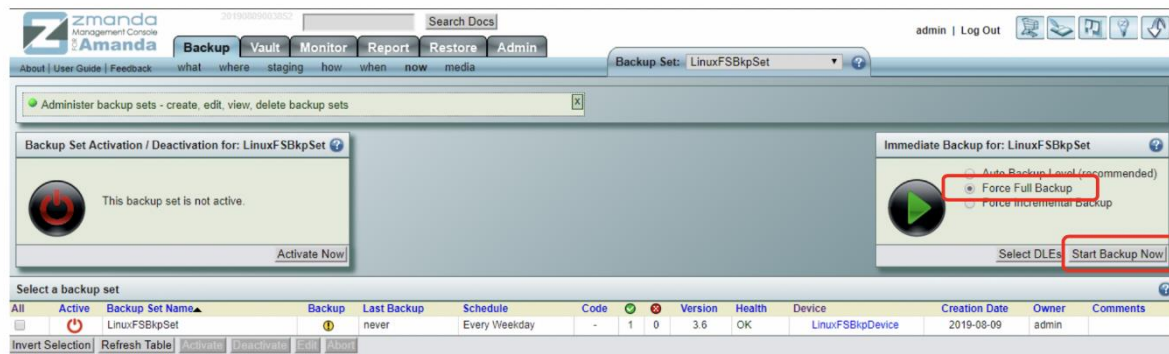
5. Provide "Location Restriction". For this example, provide location restriction as "us-east-1". Then click on "Add".



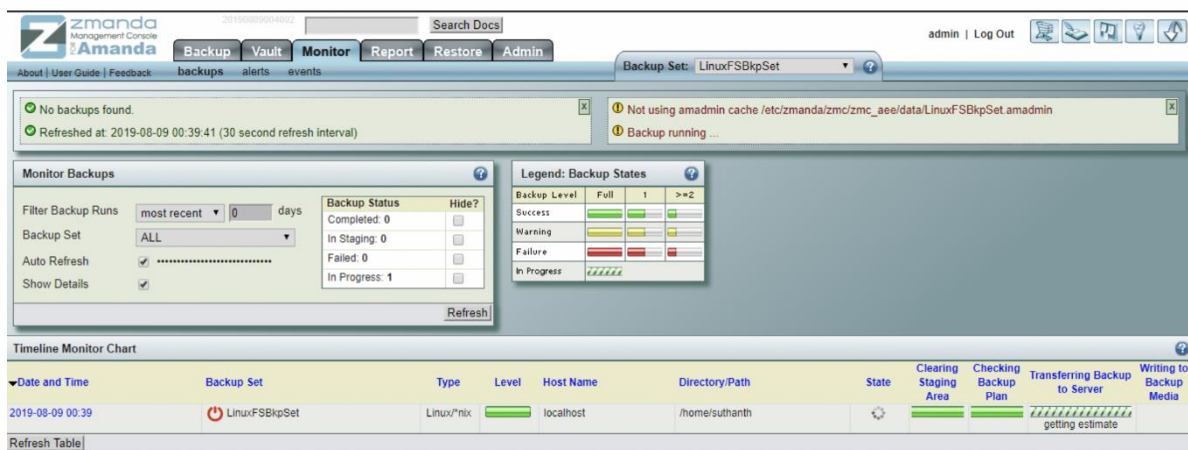
6. This will create a bucket on Wasabi cloud with the name “zmc-<access-key>-<backup set name>”.

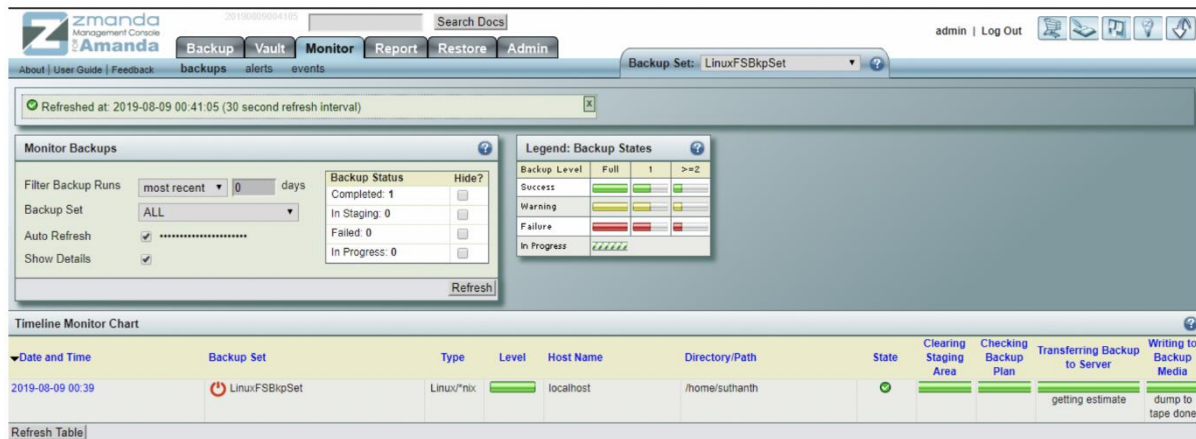
7. Follow steps below on how to create a backup

- Go to “Backup -> now” page. Select the radio button “Force Full Backup”.
- Click on “Start Backup Now”.
- This starts the backup process.

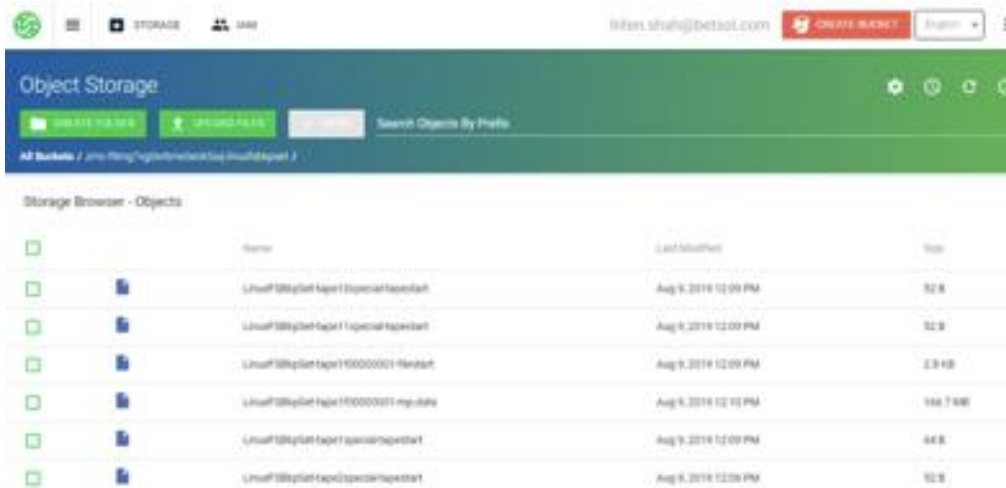


8. Below shown is the “Monitor -> backups” page, where the user can check the status of the backup. Refer to the 2 screen shots below:





9. User can check the backups in Wasabi console.



The screenshot shows the Wasabi Object Storage console interface. At the top, there's a navigation bar with tabs: STORAGE, and a user profile section showing 'shah@betsol.com' and a 'CREATE BUCKET' button. Below the navigation bar, there's a search bar and a 'Storage Browser - Objects' section. The table lists objects with columns: Name, Last Modified, and Size. The objects are listed in a table with icons for each object.

Name	Last Modified	Size
LinuxFSBkpSet-tape1-special-tape-part1	Aug 9, 2019 12:09 PM	52 B
LinuxFSBkpSet-tape1-special-tape-part1	Aug 9, 2019 12:09 PM	52 B
LinuxFSBkpSet-tape1-00000001-Header	Aug 9, 2019 12:09 PM	23 KB
LinuxFSBkpSet-tape1-00000001-mg-data	Aug 9, 2019 12:10 PM	166.7 KB
LinuxFSBkpSet-tape1-special-tape-part1	Aug 9, 2019 12:09 PM	64 B
LinuxFSBkpSet-tape1-special-tape-part1	Aug 9, 2019 12:09 PM	52 B